

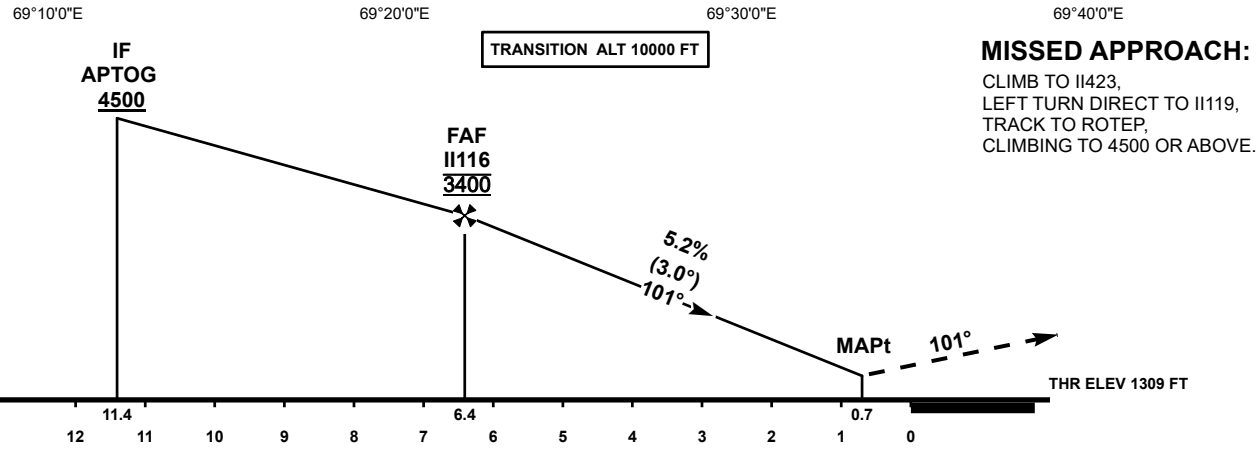
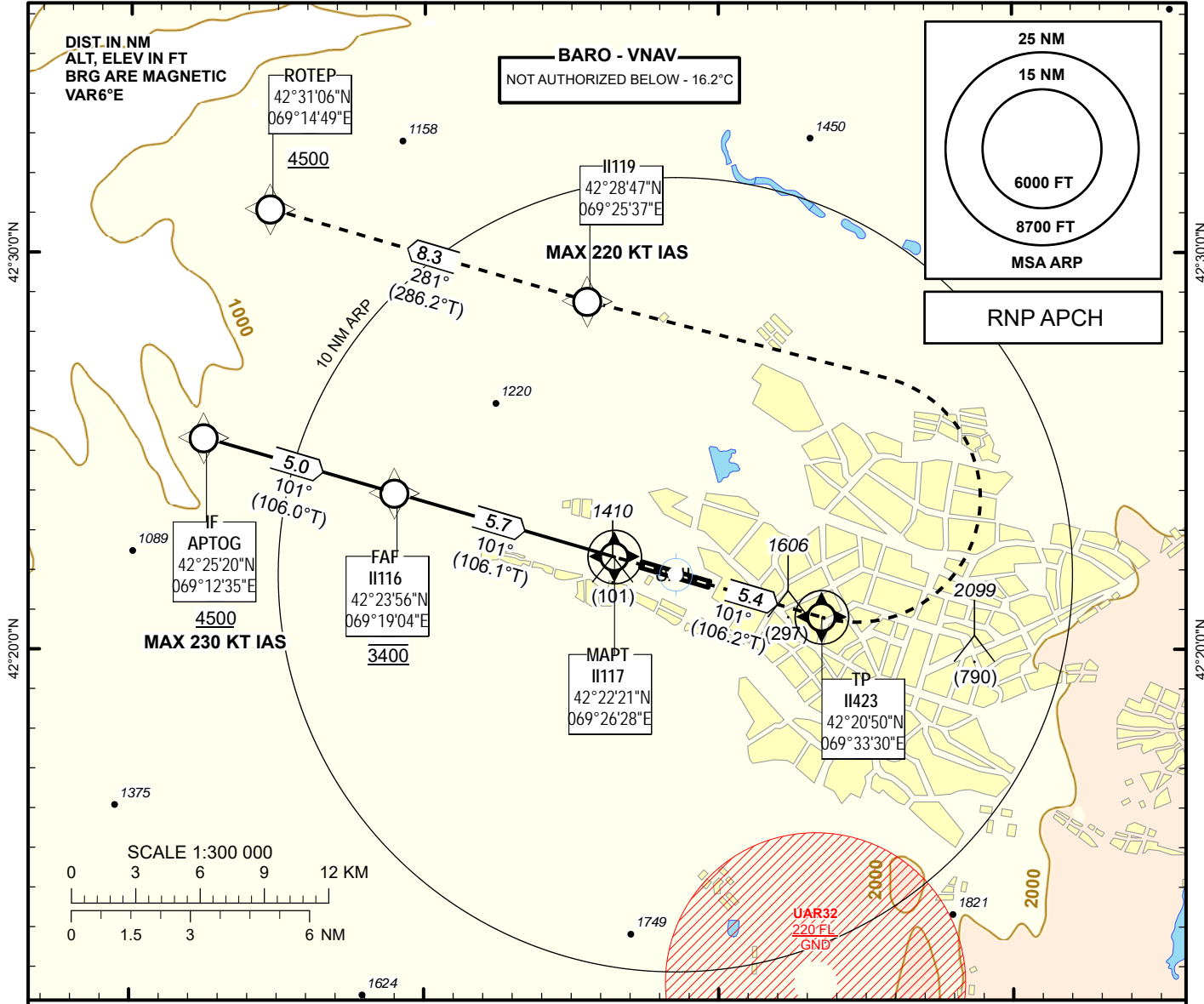
INSTRUMENT
APPROACH
CHART - ICAO

AERODROME ELEV 1387FT
HEIGHTS RELATED TO
THR RWY10 - ELEV 1309FT

SHYMKENT TOWER 125.9
SHYMKENT ATIS (EN) 119.2
SHYMKENT ATIS (RU) 126.6

SHYMKENT
RNP
RWY 10

69°10'0"E 69°20'0"E 69°30'0"E 69°40'0"E 42°30'0"N 42°20'0"N



OCA (OCH)		A	B	C	D
Straight	LNAV	1660 (351)			
	LNAV/VNAV	1620 (310)	1630 (320)	1650 (340)	1680 (370)

GS	Kt	70	90	120	150	180
Rate of descent (5.2%)	ft/min	370	480	640	800	960
FAF-MAPt 5.7 NM	min:sec	04:53	03:48	02:51	02:17	01:54

CHANGES: Editorial.

TABULAR DESCRIPTION

UAI RNP RWY10											
Serial Number	Path Descriptor	Waypoint Identifier	Fly - over	Course °M(°T)	Magnetic Variation(°)	Distance NM	Turn Direction	Altitude FT	Speed KT	VPA (°)	Navigation Specification
010	IF	APTOG	-	-	+5.5	-	-	+4500	-230	-	RNP APCH
020	TF	II116	-	101(106.0)	+5.5	5.0	-	@3400	-	-	RNP APCH
030	TF	II117	Y	101(106.1)	+5.5	5.7	-	@1580	-	-3	RNP APCH
040	CF	II423	Y	101(106.2)	+5.5	5.4	-	-	-	+1.4	RNP APCH
050	DF	II119	-	-	+5.5	-	L	-	-220	+1.4	RNP APCH
060	TF	ROTEP	-	281(286.2)	+5.5	8.3	-	+4500	-	-	RNP APCH

WAYPOINT LIST

UAI RNP RWY10		
Waypoint Identifier	Coordinates	
APTOG	42 25 19.51N	069 12 34.86E
II116	42 23 56.36N	069 1903.98E
II117	42 22 20.97N	069 26 27.87E
II119	42 28 46.87N	069 25 37.28E
II423	42 20 49.65N	069 33 30.43E
ROTEP	42 31 05.57N	069 14 49.44E